

The European Commission's science and knowledge service

Joint Research Centre

How to increase the **POLICY IMPACT** of your research?



Lene Topp, Knowledge for Policy

Introduction to the JRC

JRC's VISION and MISSION

OUR VISION

*To play a central role in creating,
managing and making sense
of collective scientific knowledge
for better EU policies*

OUR MISSION

*As the science and knowledge service
of the Commission, our mission is
to support EU policies
with independent evidence
throughout the whole policy cycle*



JRC sites

Headquarters in Brussels
and research facilities located
in **5 Member States:**

- Belgium (Geel)
- Germany (Karlsruhe)
- Italy (Ispra)
- The Netherlands (Petten)
- Spain (Seville)





€ 400 - 500 million Budget annually,

30% of activities in policy preparation
70% in implementation

+400 instances of support to the EU policy-maker annually



6 locations in 5 Member States: Belgium, Germany, Italy, the Netherlands, Spain

56 large scale research facilities, more than 110 online databases



3 000 staff
83% of core research staff PhD's



Over 1,400 scientific publications per year

Challenges at the science-policy interface

Evidence for policy 1.0

Science

Policy



Complexity



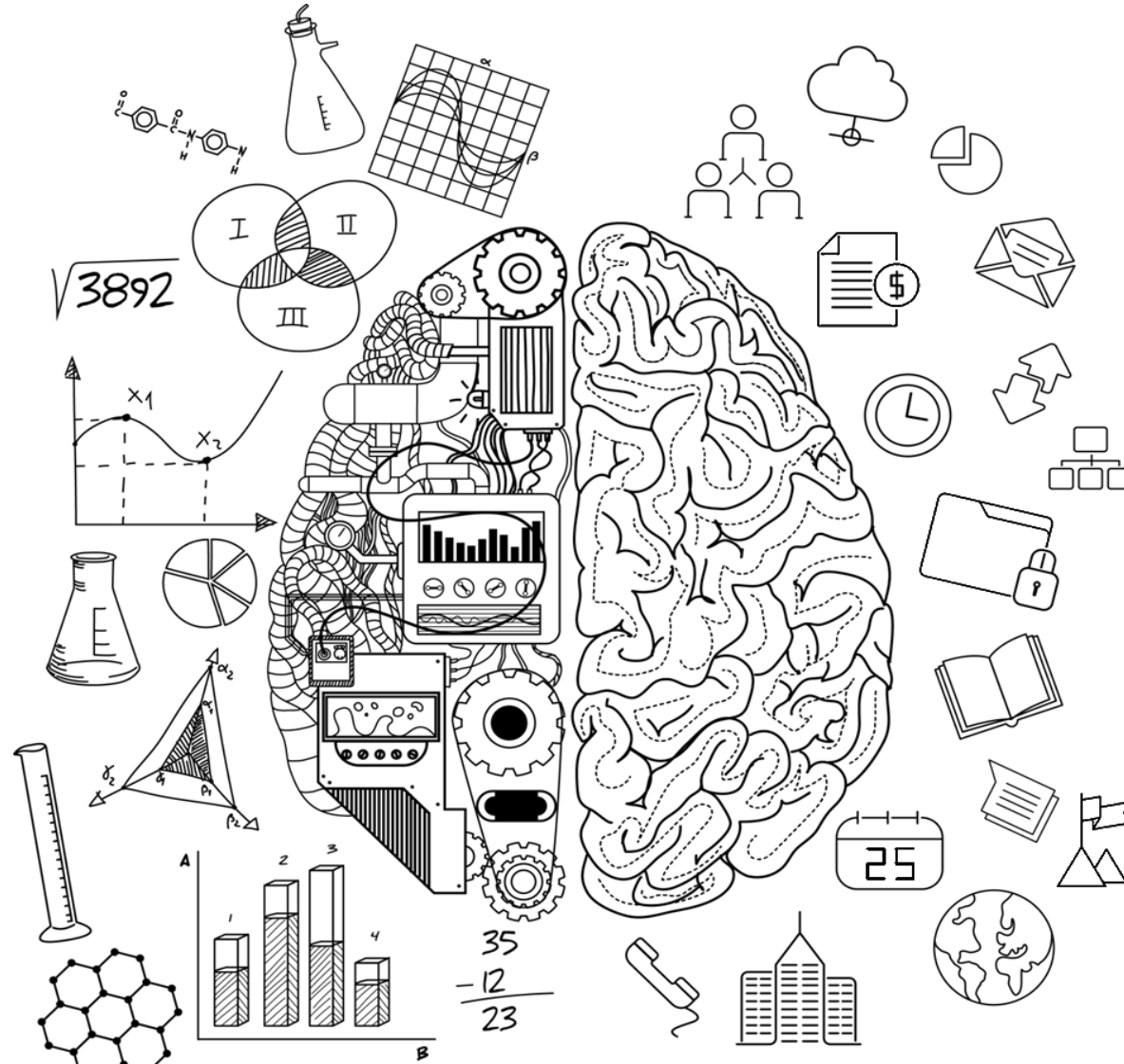


*45 degrees, 25 minutes, 29 seconds north
75 degrees, 42 minutes, 20 seconds west*



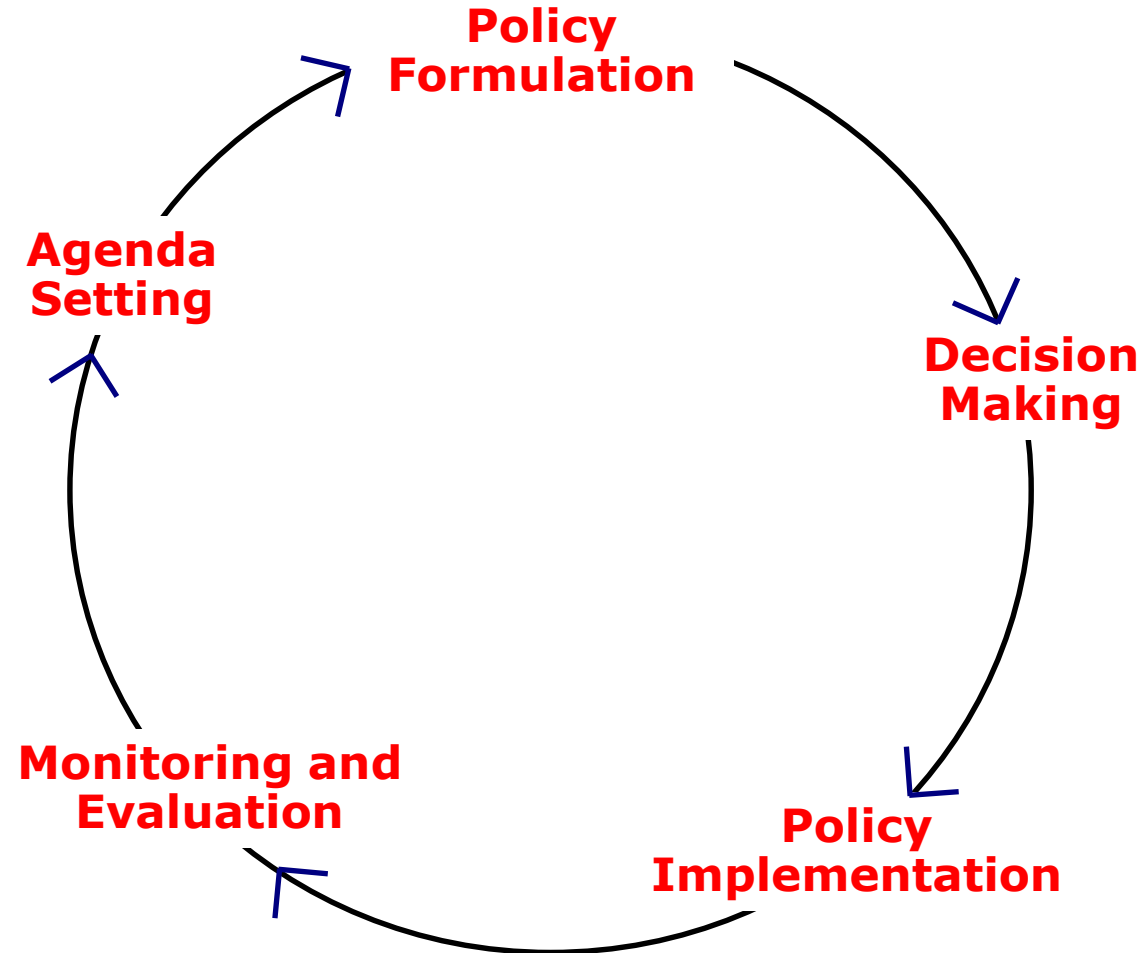
Different mindsets

Scientist



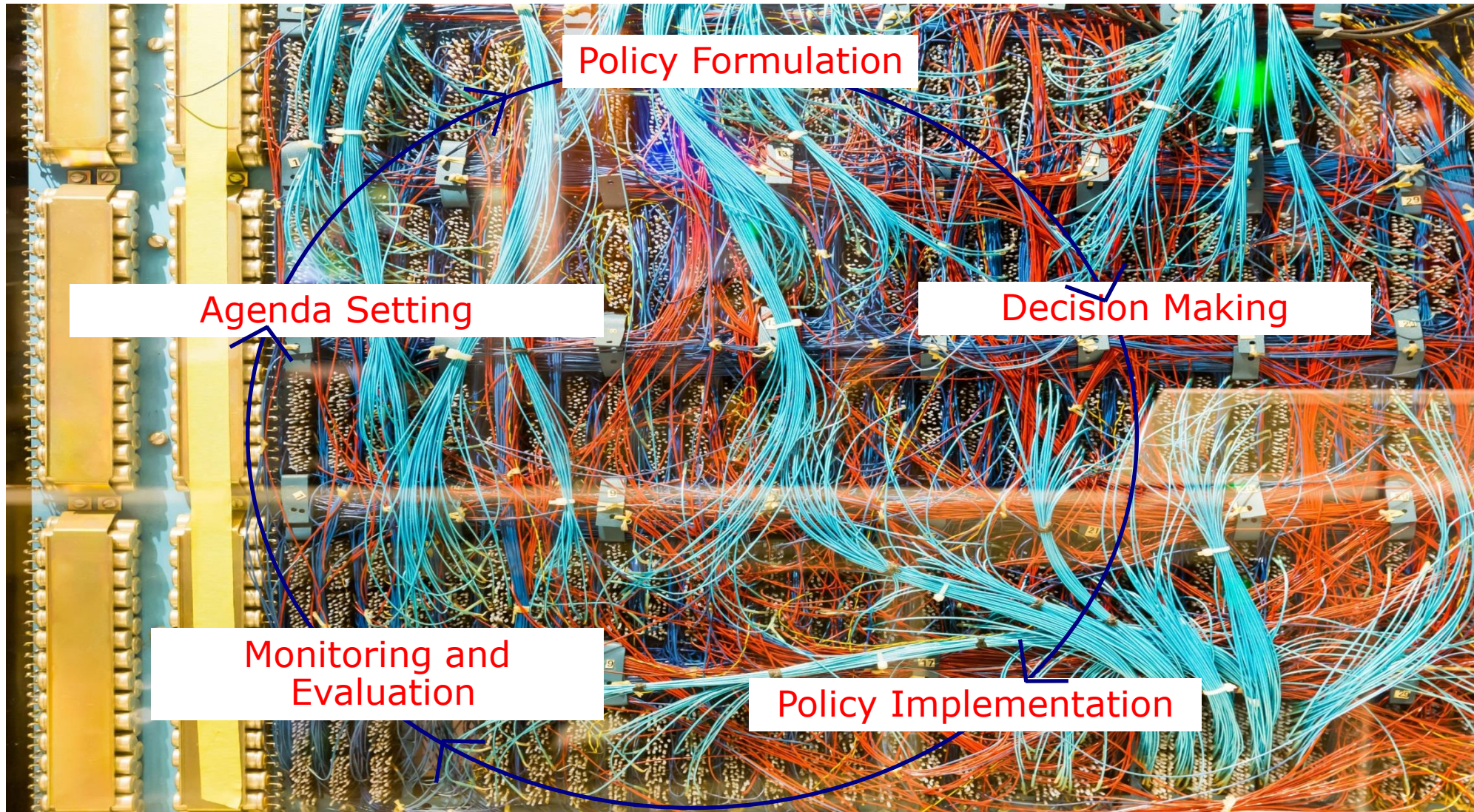
Policy-maker

Classic policy cycle is a concept only



Source: John Young, Overseas Development Institute

Reality of policy cycle





Uncertainty and risk





50

51

52

53

54

55

56

57

70

71

72

73

74

75

76

77

90

91

92

93

94

95

96

97

110

111

112

113

114

115

116

117

130

131

132

133

134

135

136

137

150

151

152

153

154

155

156

157

170

171

172

173

174

175

176

177

190

191

192

193

194

195

198

197



Myth of rational decision-making

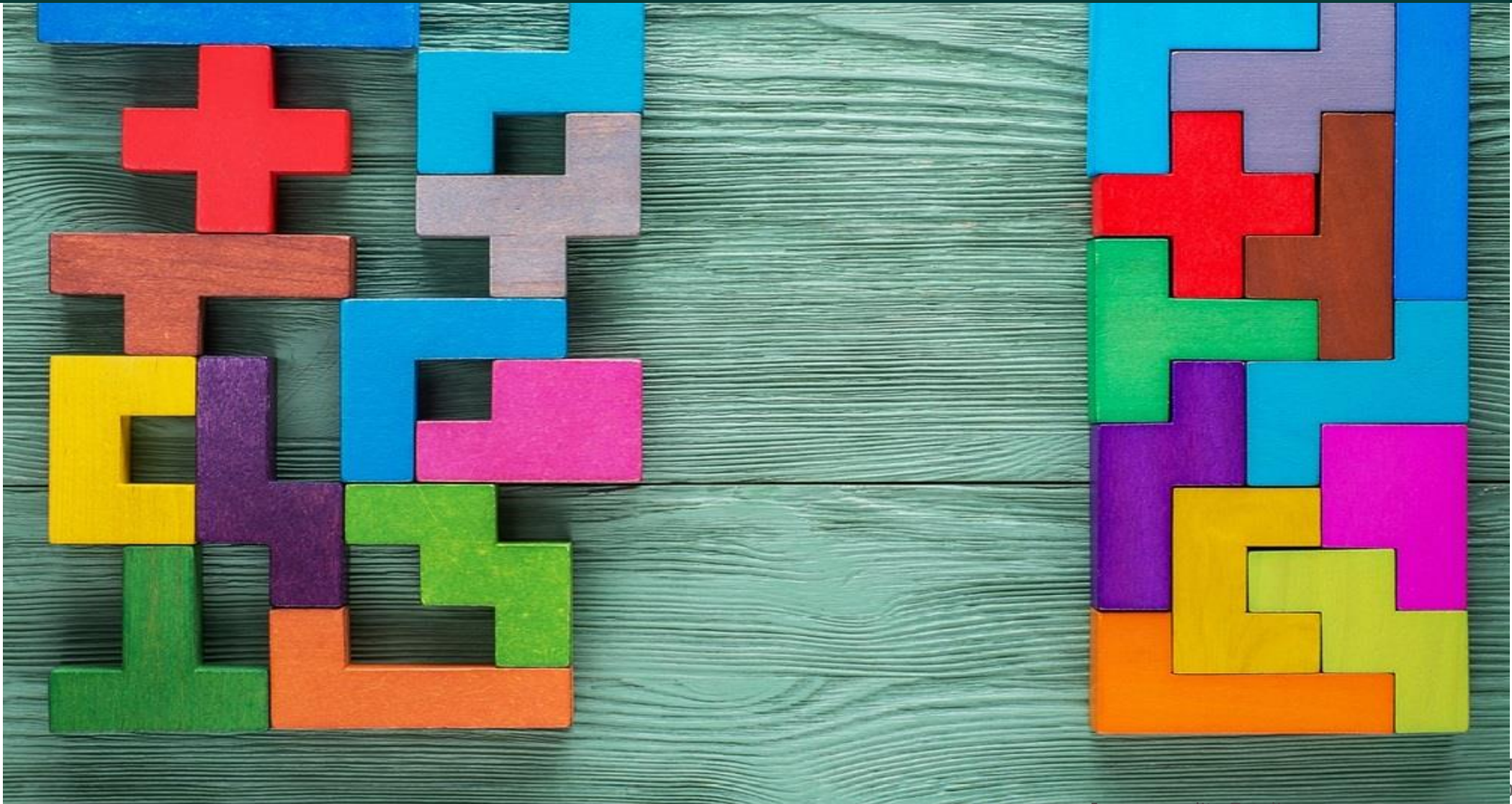
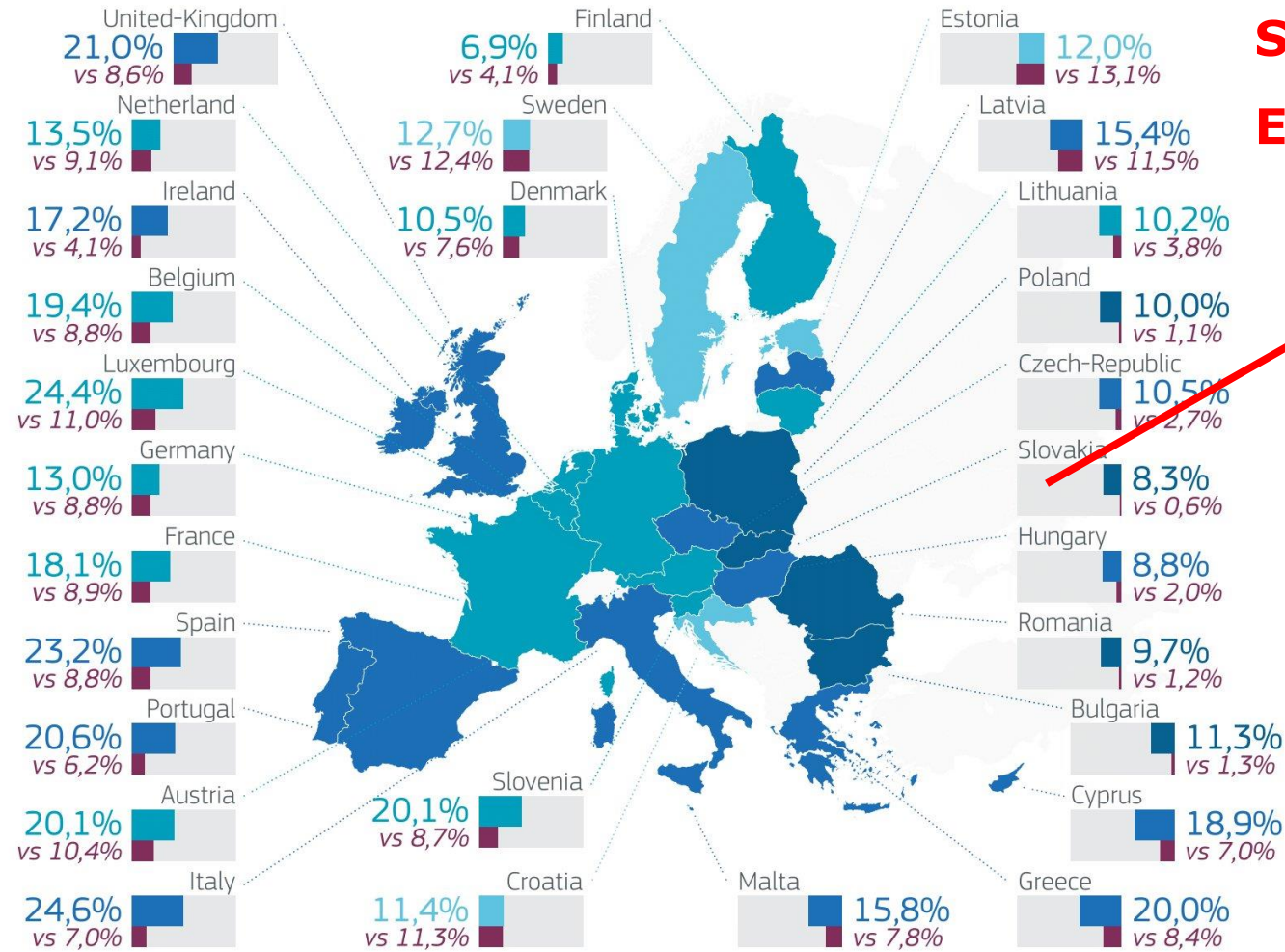


Image credit: Fotolia

Facts don't speak for themselves

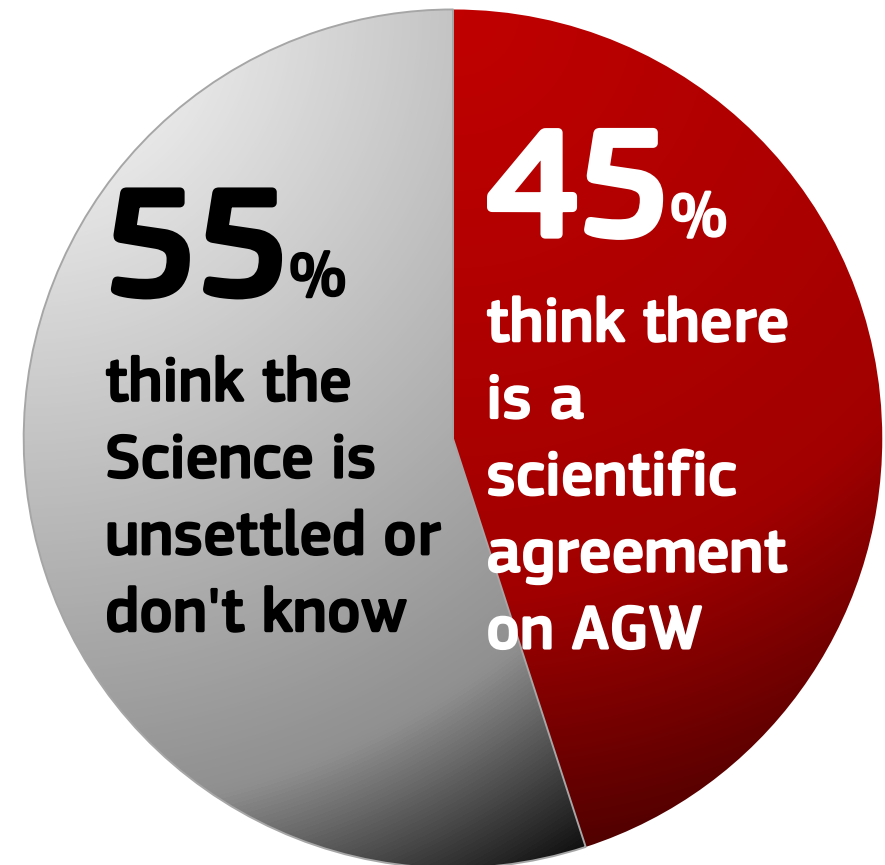
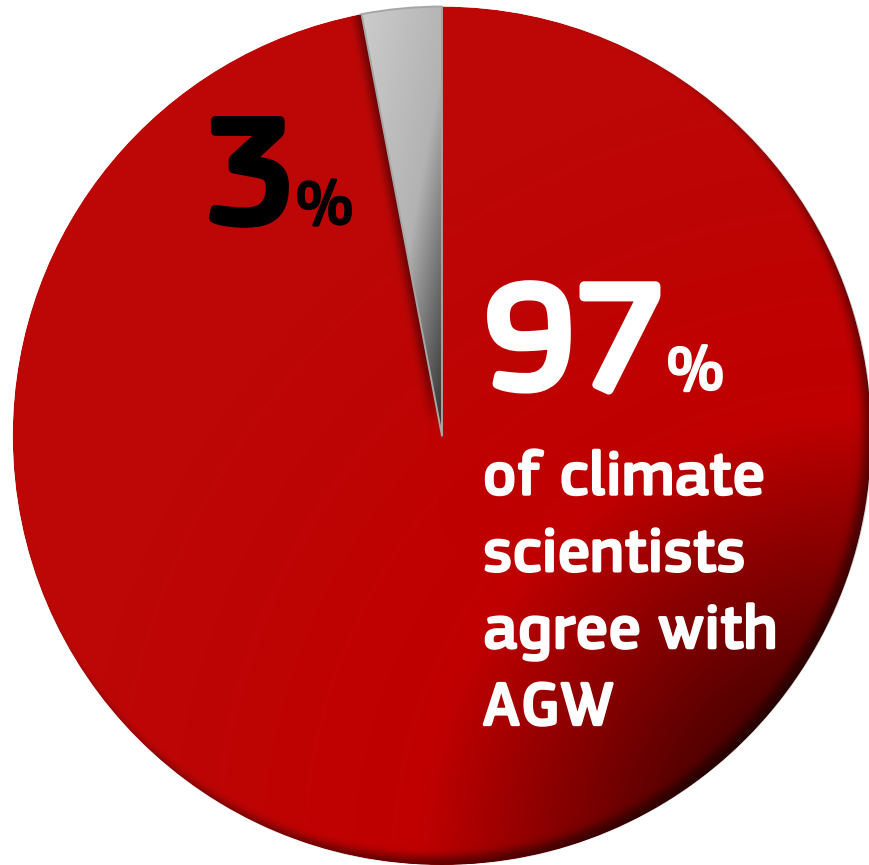


**Share of immigrants
Estimation vs reality**

**Overestimated
14x**

■ Average estimated proportion of immigrants in the total population. The darker the blue, the higher the ratio between the estimated and real proportion. Source: Special Eurobarometer 469, April 2018

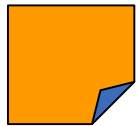
Why science for policy is so difficult?



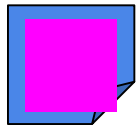
Breakout Session

Please list **THREE OBSTACLES** that prevent scientific research being picked up by policy makers.

(1 per post-it)



Caused by scientists



Caused by scientists & policy makers



Caused by policy makers

Circle of Concern

Circle of Influence

Circle of Control

Skills for policy impact



Science 2.0

for policy

ADDITIONAL SKILLS NEEDED

Competence building for scientists



Image: JRC



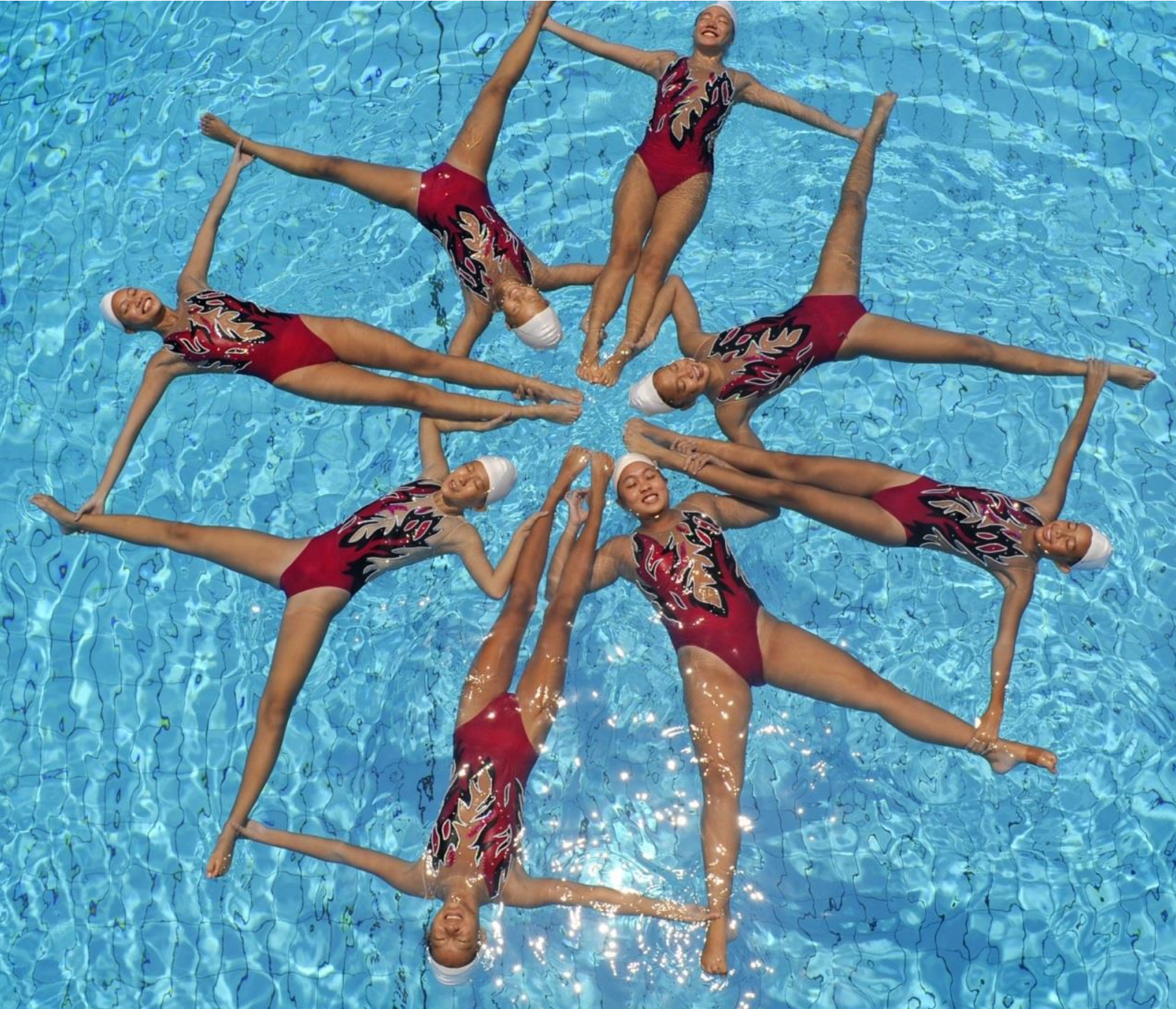
Understanding policy and science



Research synthesis



Managing expert communities



Interpersonal skills

Image: Fotolia



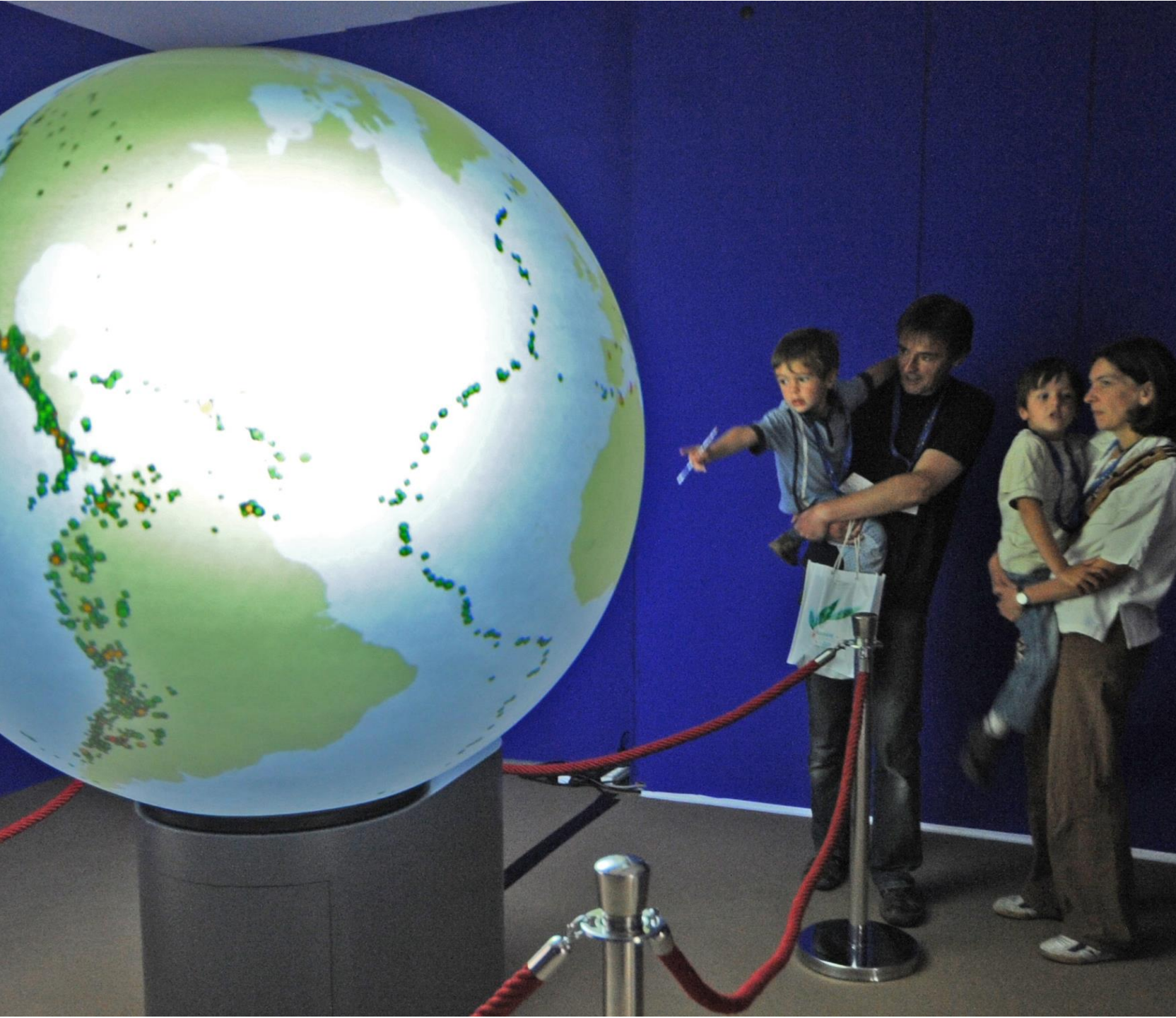
European Commission



Participating in policymaking



Communicating scientific knowledge



Engaging with citizens & stakeholders



“My question is: Are we making an impact?”

Image: S. Gross



Monitoring and evaluation (of impact)

Breakout Session - Questions

1. In your view, which are the three most important clusters of skills for the research community to achieve policy impact?
2. In your view, which are the three least important clusters of skills for the research community to achieve policy impact?
3. In your view, which 3 clusters of skills are the research community strongest at?
4. In your view, which 3 clusters of skills are the research community weakest at?

Breakout Session - Harvesting

Once you have come to an agreement in your group, please report back using the following colour codes:

- Three most important clusters of skills **(RED)**
- Three least important clusters of skills? **(BLUE)**
- Three strongest clusters of skills within the research community? **(GREEN)**
- Three weakest clusters of skills within the research community? **(YELLOW)**

Breakout Session – Questions about your research

- 1) What steps could a research organisation take to improve the impact of its research on policy?
- 2) What steps could you take to improve its impact on policy?

Thank you!



<https://ec.europa.eu/jrc/en>

<http://europa.eu/!jj73DJ> Evidence for Policy Community



@EU_ScienceHub



EU Science Hub - Joint Research Centre



Joint Research Centre



EU Science Hub